



Buninyong & District Financial Services Ltd

Grant Writing Workshop

Kelly Bevan
Community Partnerships Lead

Community Bank
Buninyong

 Bendigo Bank

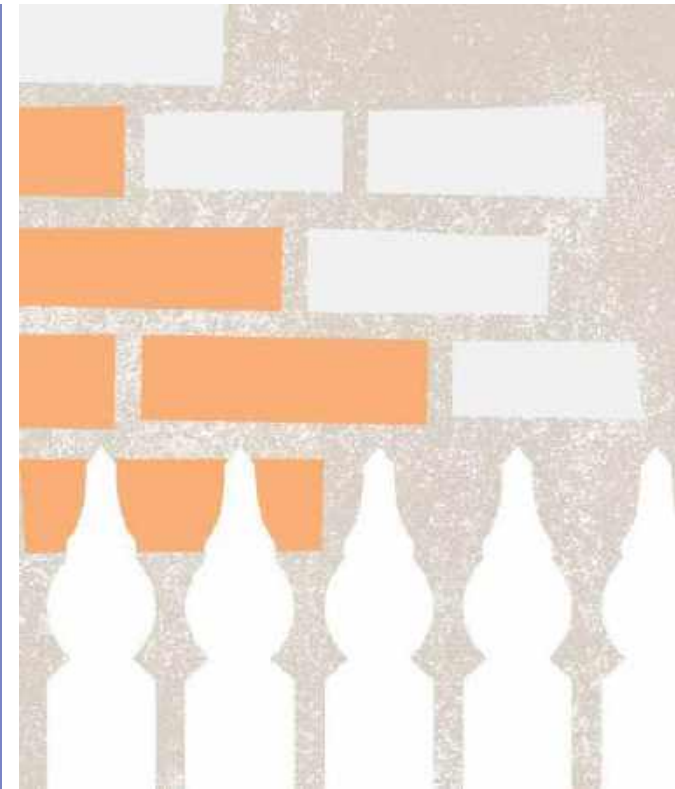
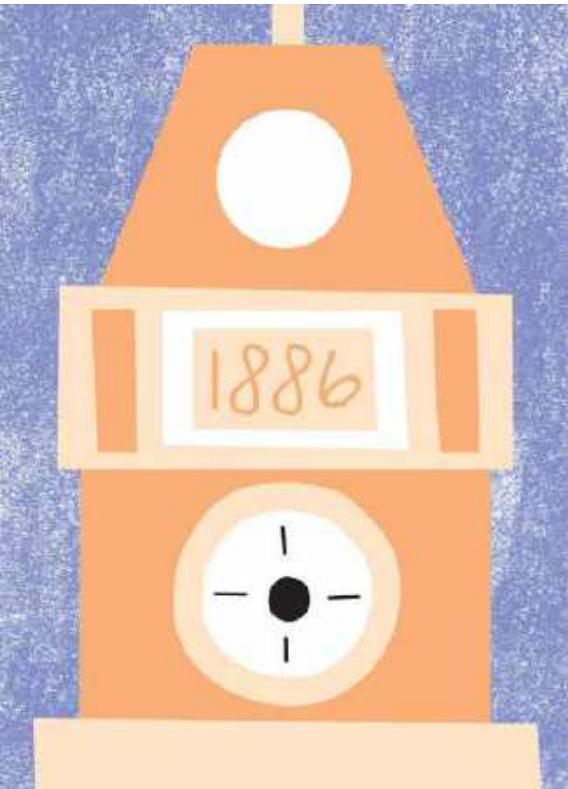


- Community-owned franchise
- Volunteer Board of Directors
- Social Traders Certification
- Community House - \$700,000 invested
- Community Gold
- Community Investment Program
- +2.5M funding distributed
- x 8 leveraged funds

“Helping to build a thriving, resilient and inclusive community”



SparkTank



So, you have a great idea...

What is your idea?
What makes a great application?

Does the project have merit?

- Why is your project important, and how will it help the community?
- What are the goals of your project, and do you have everything you need to make it happen?
- How well have you planned your project, and can you finish it on time with the resources you have?
- Who needs it?
- How does it align with your organisation's goals?



Guidelines

- Eligibility of Group
- Eligibility of Project
- Past recipients



You know, you are
a great listener!



Pre-Application
Discussion

WEIGHTED SCORING EXAMPLE

A score from 1-7 is given for each Criteria and then adjusted by the weighting percentage. Scores are then calculated, producing a ranking list of applications.

Process



Scoring Scale

1	2	3	4	5	6	7
Significantly less than requirements	Doesn't meet the requirements	Barely complies with the requirements	Mostly complies with the requirements	Complies with the requirements	Exceeds the requirements	Significantly exceeds the requirements



Criteria

Impact



Weight =
40%

Description

How impactful is the project?

Other Elements

- How will the community benefit from this project?
- How many people will be engaged in this project?
- What are the benefits of the activity (e.g. environmental, social, cultural heritage)?
- How does the project collaborate with stakeholders to maximize its impact and reach?

Merit



Weight =
30%

Description

Does the project have merit?

Other Elements

- Why is your project important, and how will it help the community?
- What are the goals of your project, and do you have everything you need to make it happen?
- How well have you planned your project, and can you finish it on time with the resources you have?

Innovation



Weight =
20%

Description

How innovative is the project?

Other Elements

- How well does the project address the following definition *"Something new or different that creates value"*?
- Does the project demonstrate a creative approach to addressing the identified issue or achieving its objectives?

Legacy



Weight =
10%

Description

Will the project leave a legacy?

Other Elements

- Will the project make a lasting impact or leave something helpful for people to remember or use in the future? Will it keep going after the funding ends?